

# Netherby-1 DW1 LWD RM 200MD

ARC8A-AA

id13\_0c\_02

MWD\_10

id13\_0c\_02

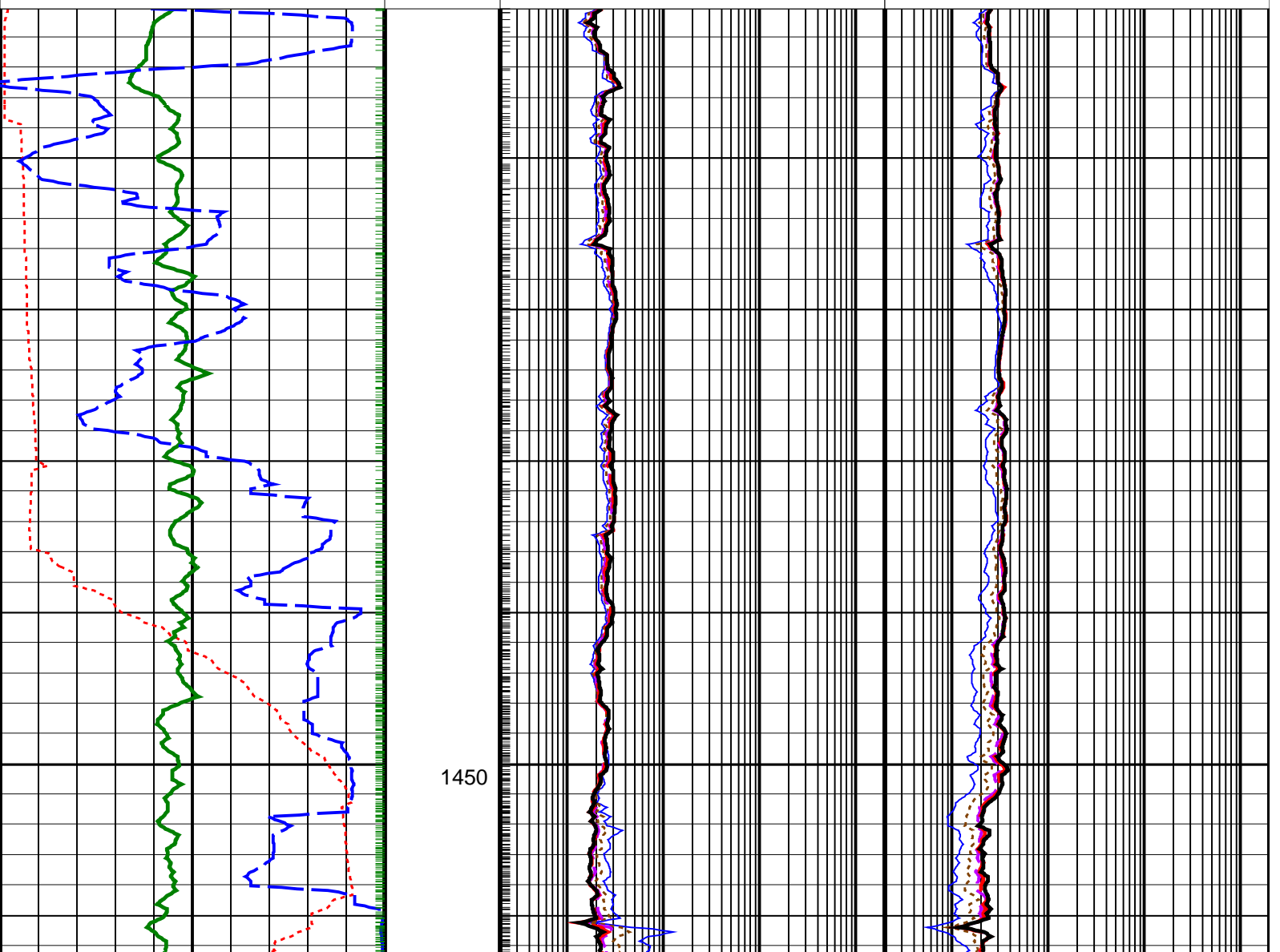
Format: VISION Resistivity 2MHz 1:200    Vertical Scale: 1:200    Graphics File Created: 06-Aug-2008 07:00

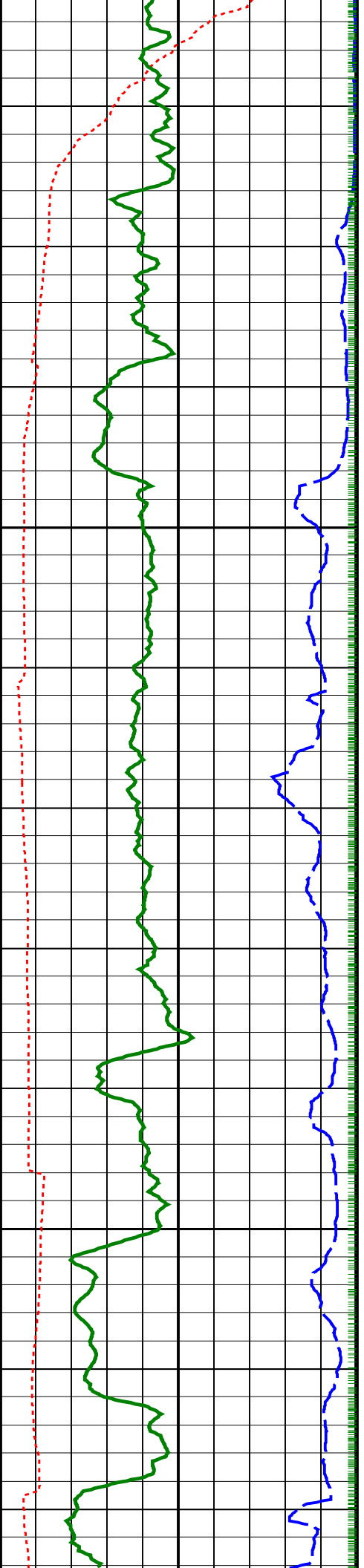
## PIP SUMMARY

- ┆ ARC Gamma Ray Samples
- ┆ ARC Resistivity Samples

	<b>ARC Phase-Shift Resistivity 40-in. at 2 MHz (P40H)</b> 0.2 (OHMM) 2000	<b>ARC Attenuation Resistivity 40-in. at 2 MHz (A40H)</b> 0.2 (OHMM) 2000
	<b>ARC Phase-Shift Resistivity 34-in. at 2 MHz (P34H)</b> 0.2 (OHMM) 2000	<b>ARC Attenuation Resistivity 34-in. at 2 MHz (A34H)</b> 0.2 (OHMM) 2000
	<b>ARC Phase-Shift Resistivity 28-in. at 2 MHz (P28H)</b> 0.2 (OHMM) 2000	<b>ARC Attenuation Resistivity 28-in. at 2 MHz (A28H)</b> 0.2 (OHMM) 2000
	<b>ARC Phase-Shift Resistivity 22-in. at 2 MHz (P22H)</b> 0.2 (OHMM) 2000	<b>ARC Attenuation Resistivity 22-in. at 2 MHz (A22H)</b> 0.2 (OHMM) 2000
	<b>ARC Phase-Shift Resistivity 16-in. at 2 MHz (P16H)</b> 0.2 (OHMM) 2000	<b>ARC Attenuation Resistivity 16-in. at 2 MHz (A16H)</b> 0.2 (OHMM) 2000

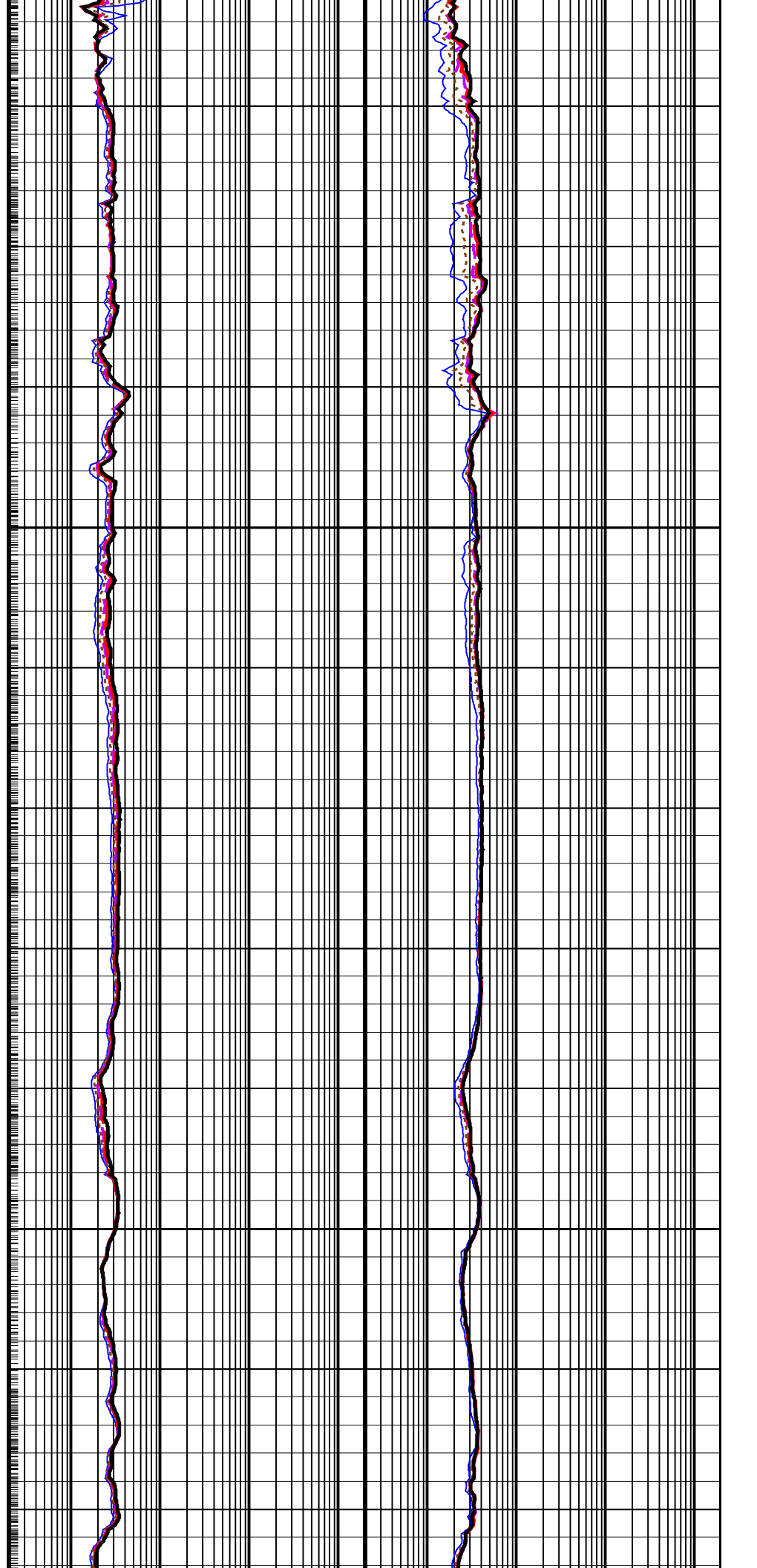
<b>Rate of Penetration, Averaged over Last 5ft (ROP5_RM)</b> 200 (M/HR) 0
<b>ARC Resistivity Time After Bit (TAB_ARC_RES)</b> 0 (HR) 10
<b>ARC Gamma Ray (GR_ARC)</b> 0 (GAPI) 200

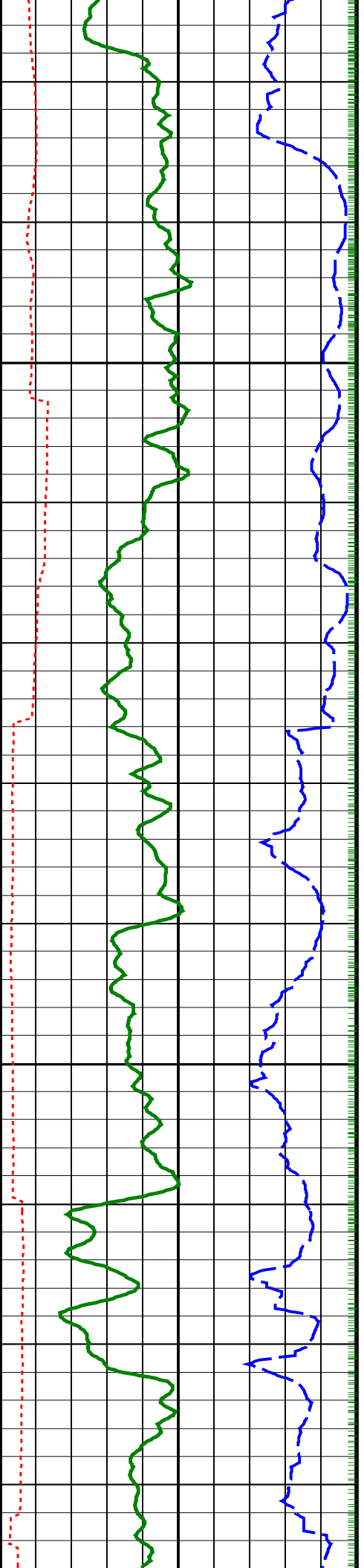




1475

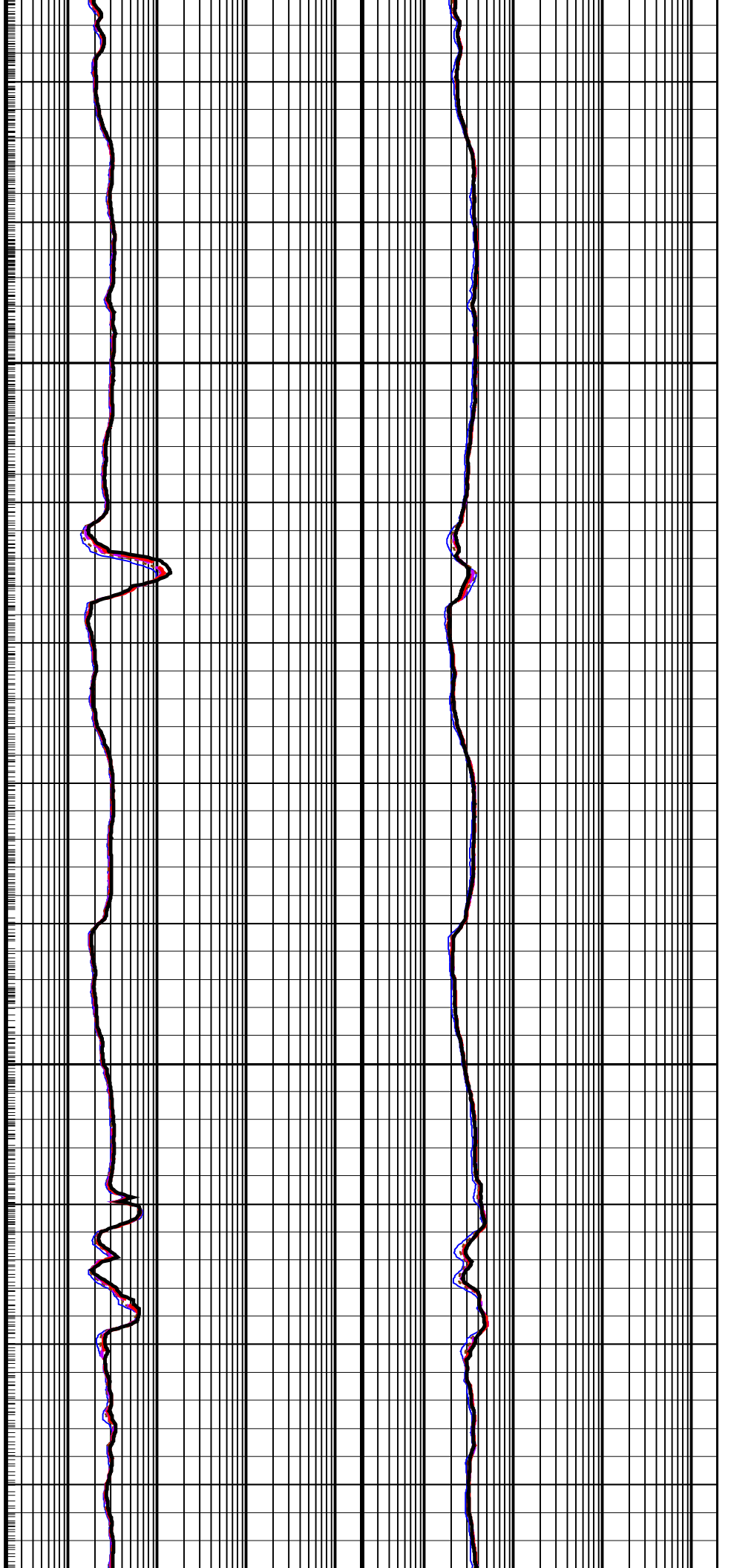
1500

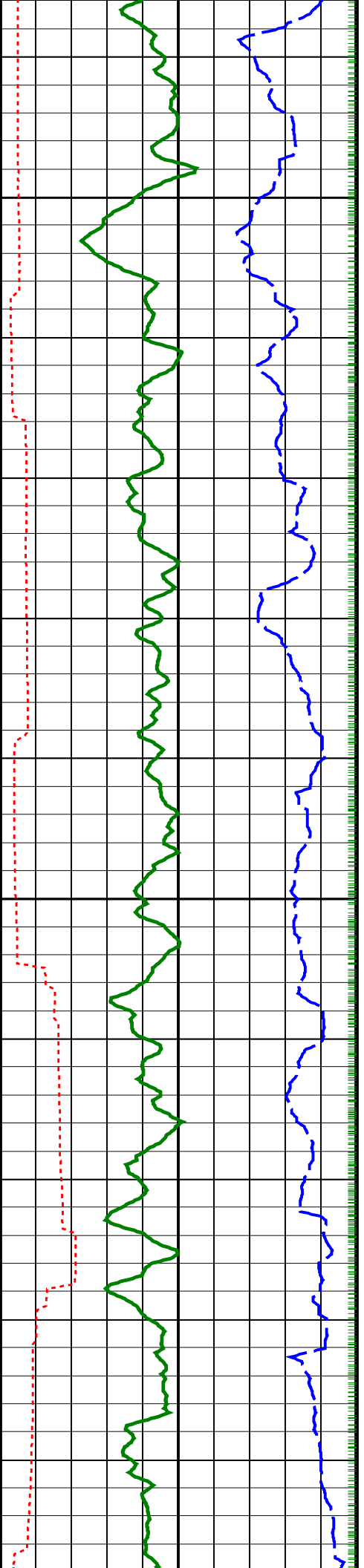




1525

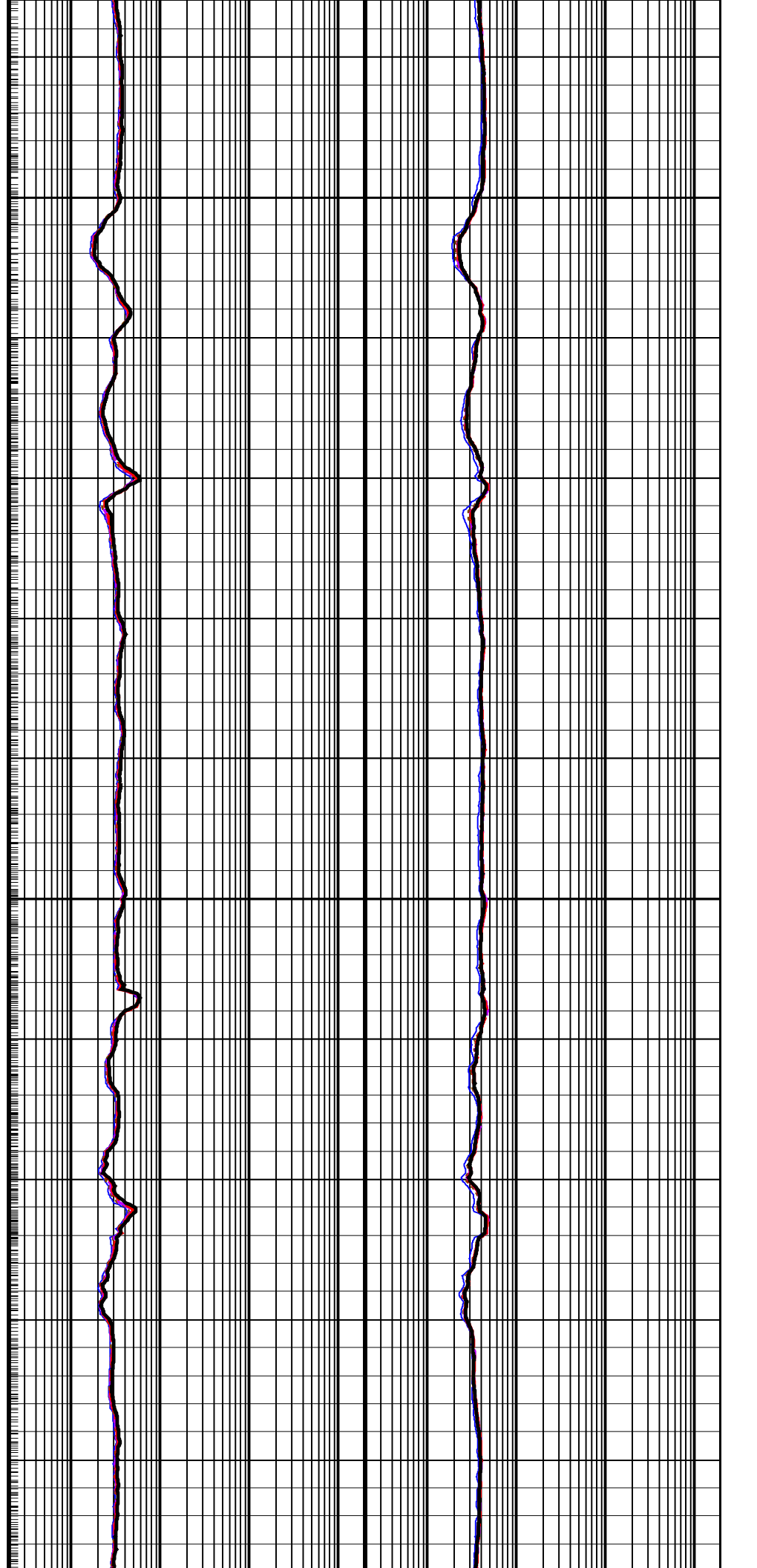
1550

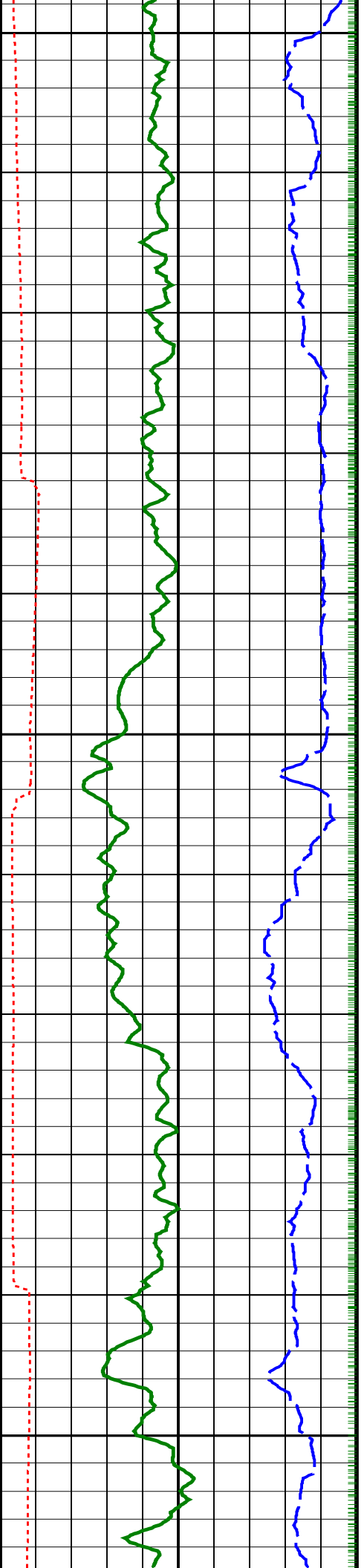




1575

1600

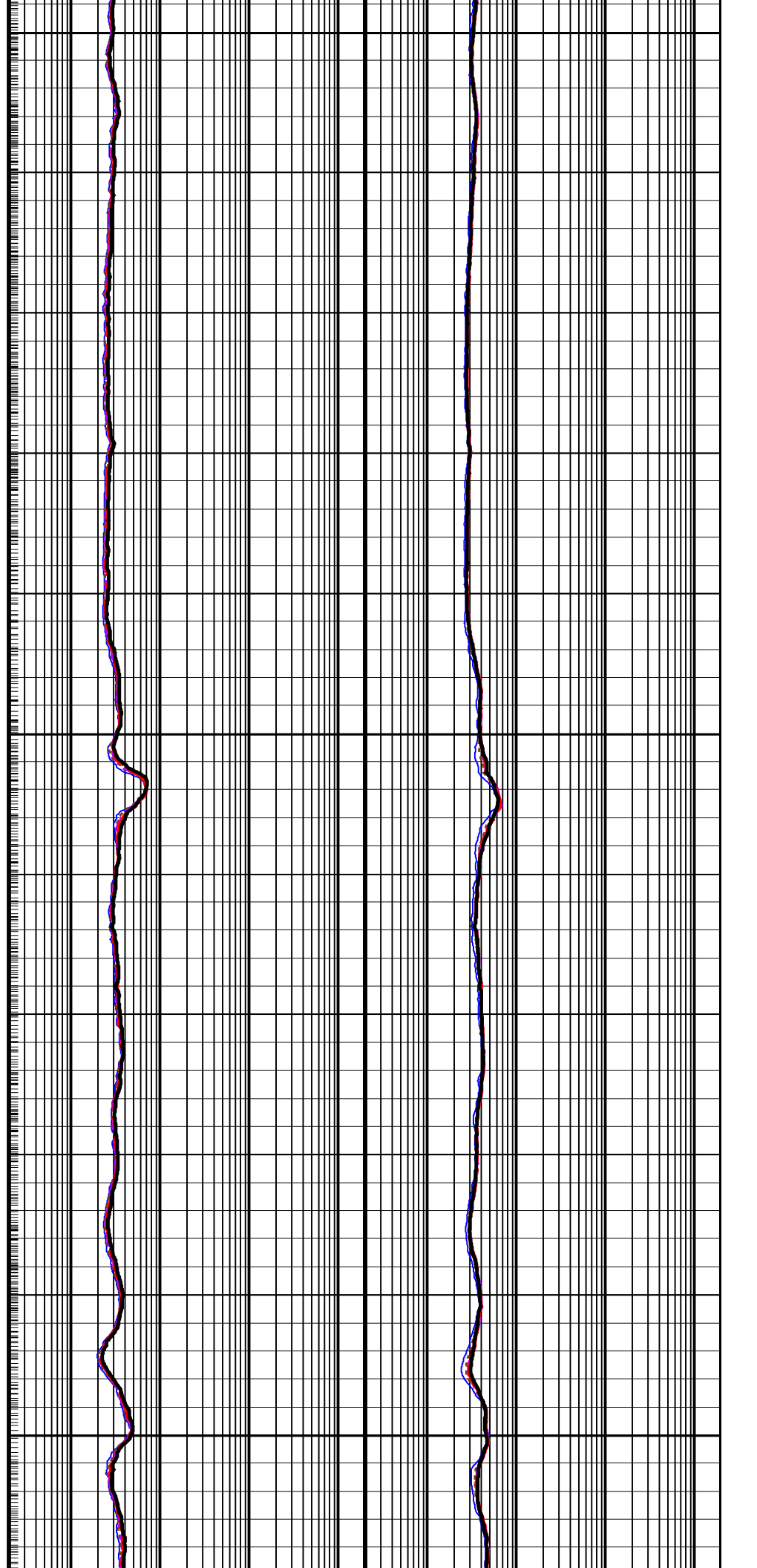


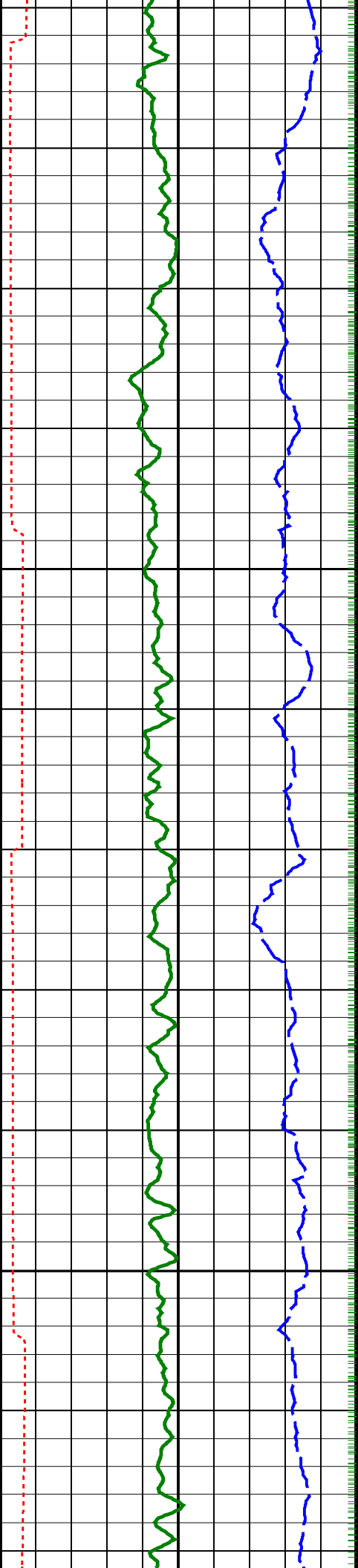


1625

1650

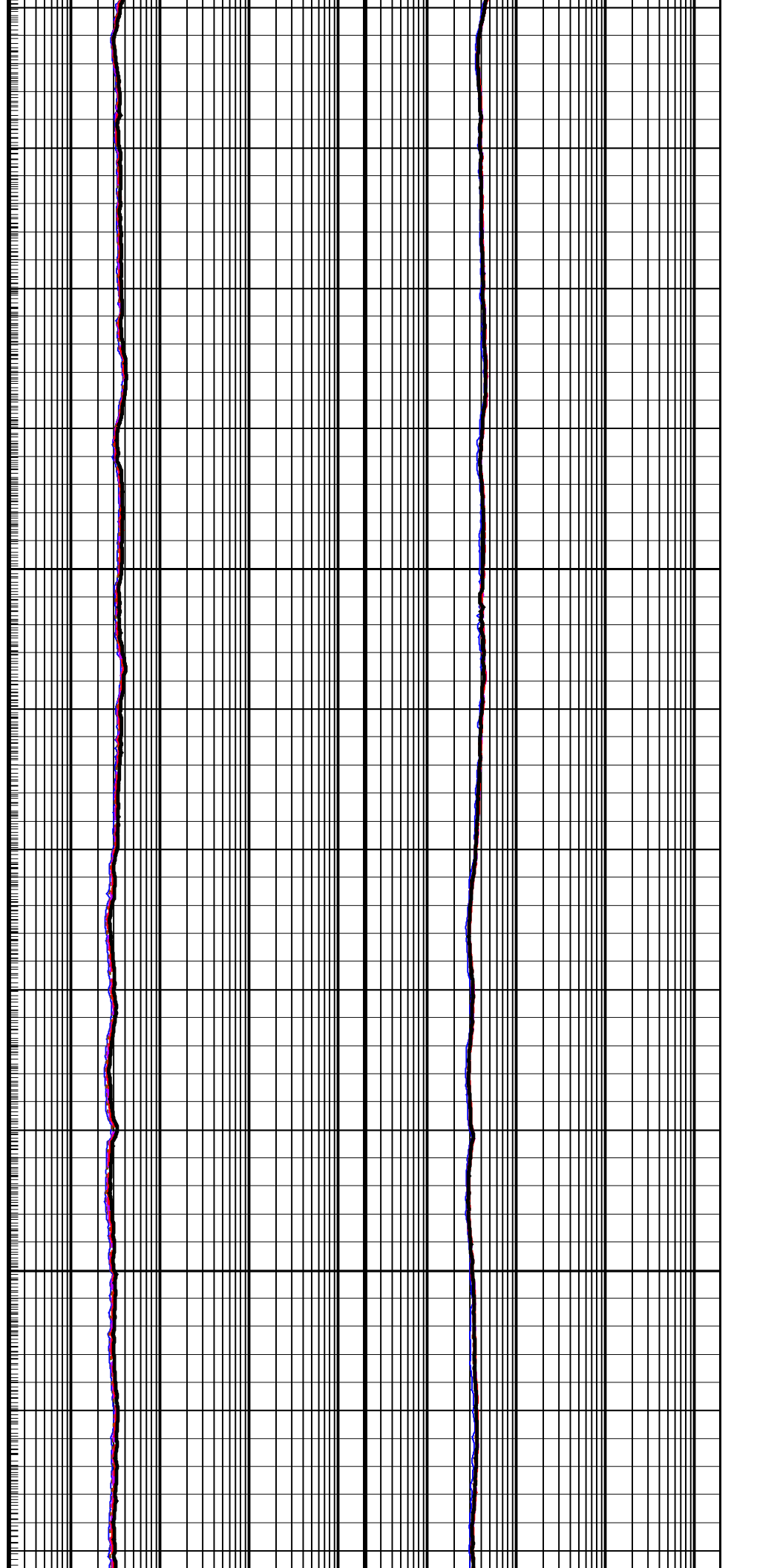
1675

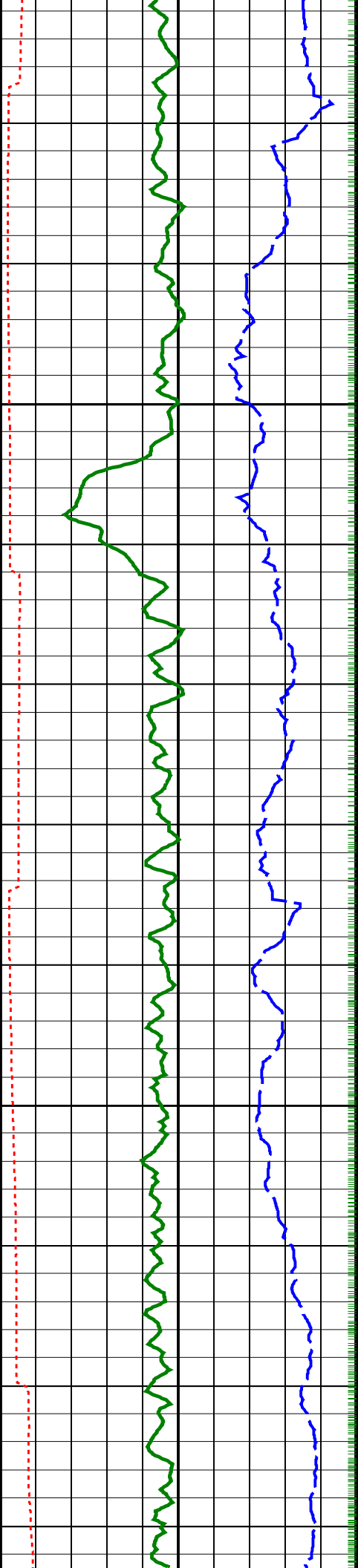




1700

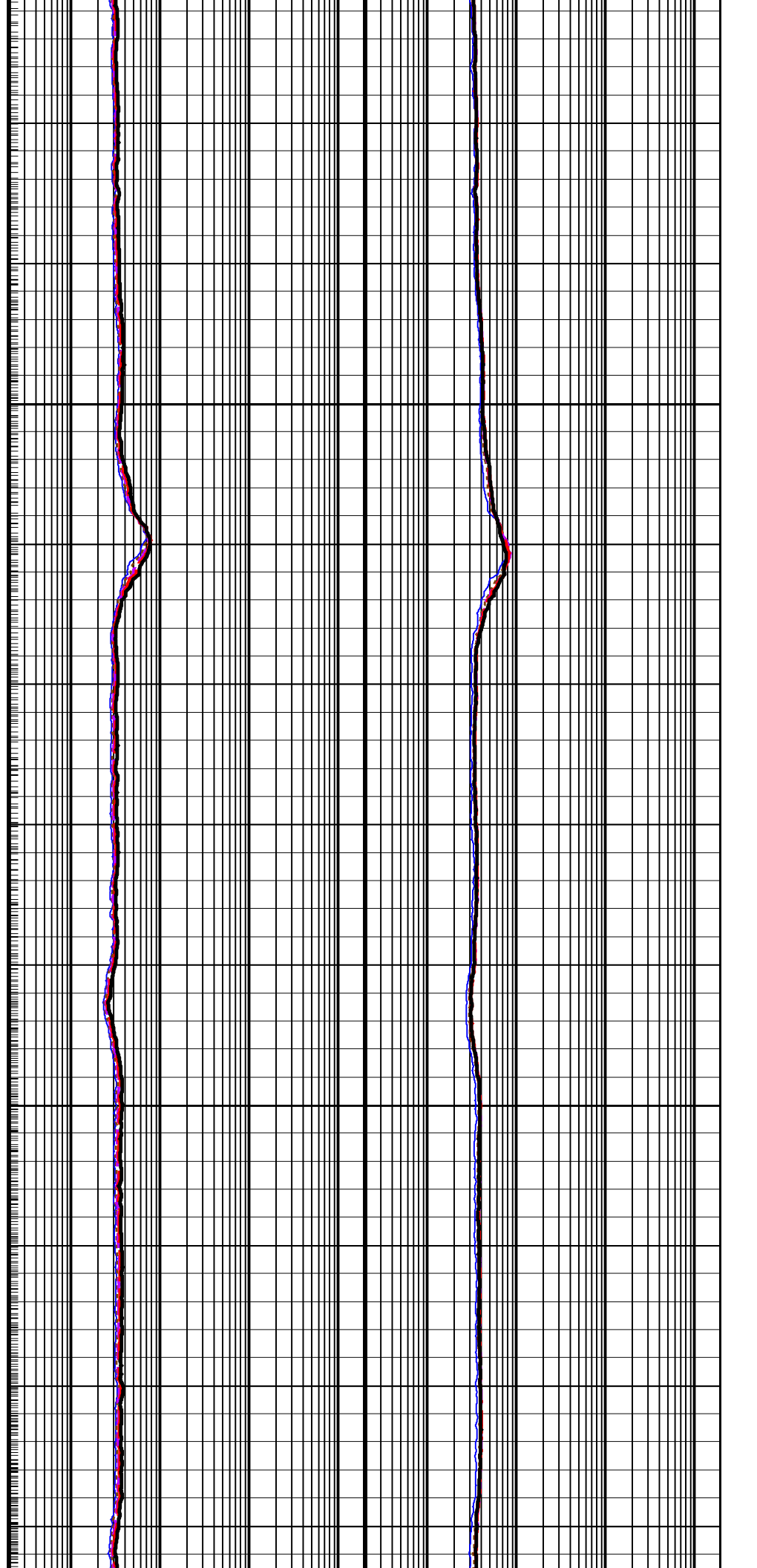
1725

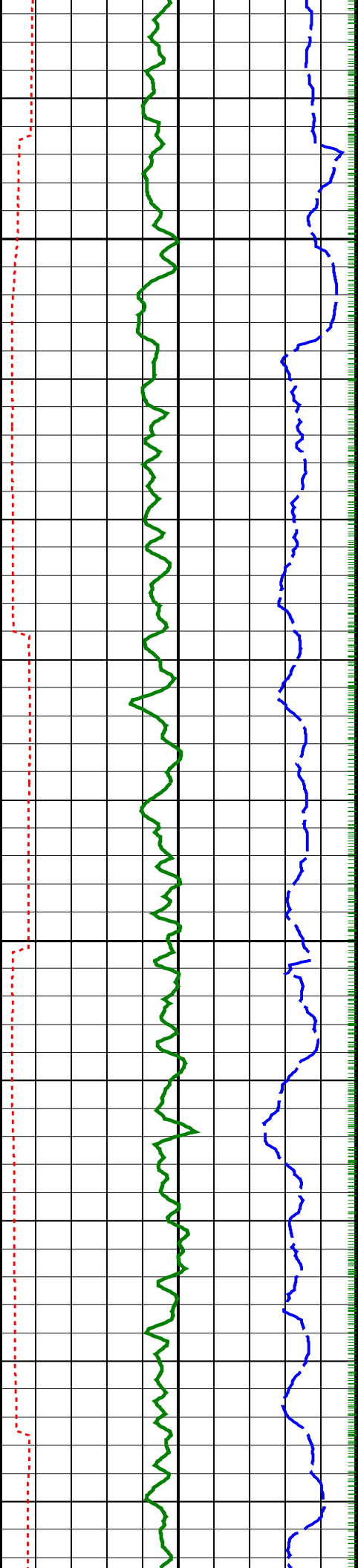




1750

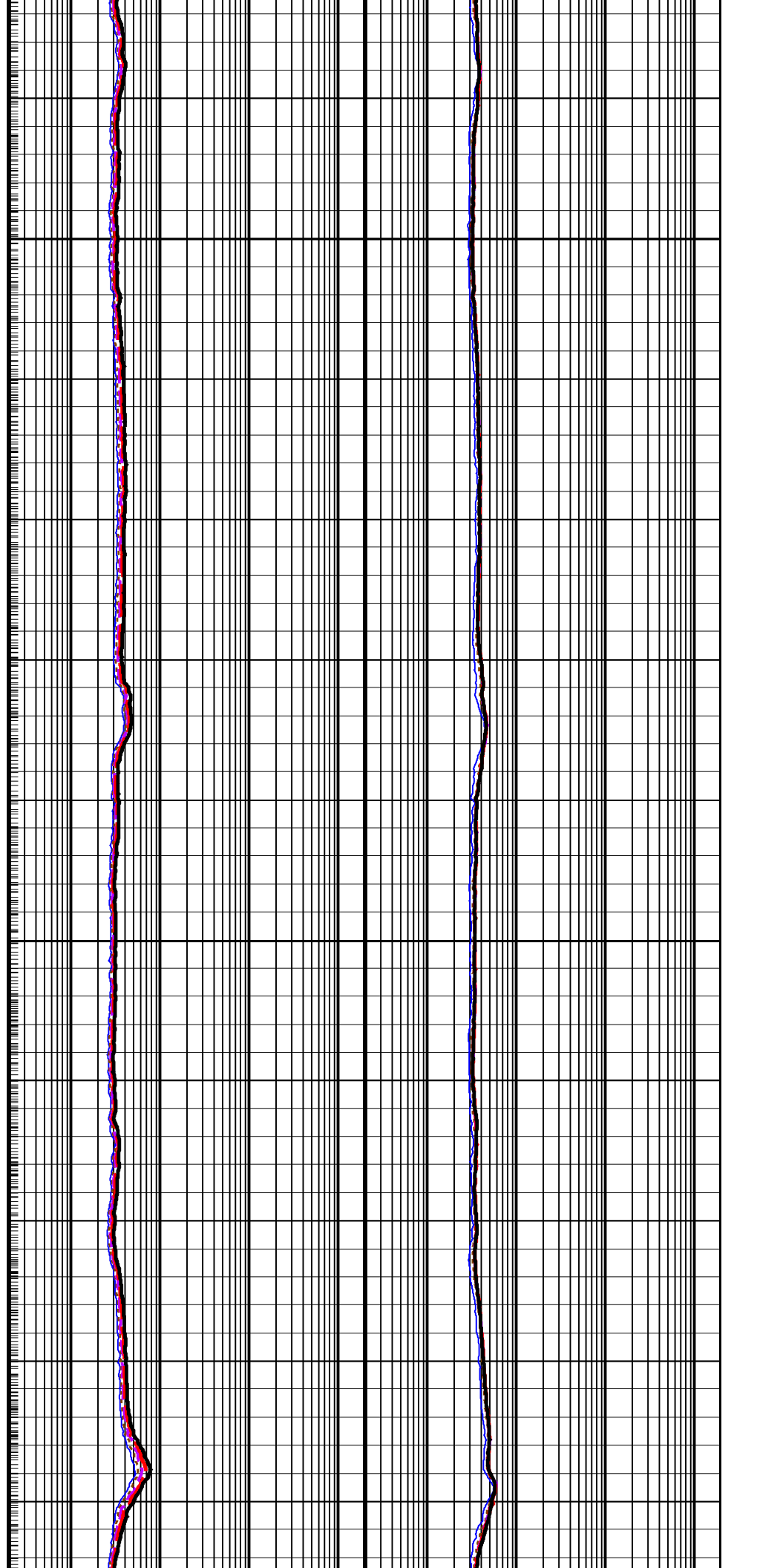
1775



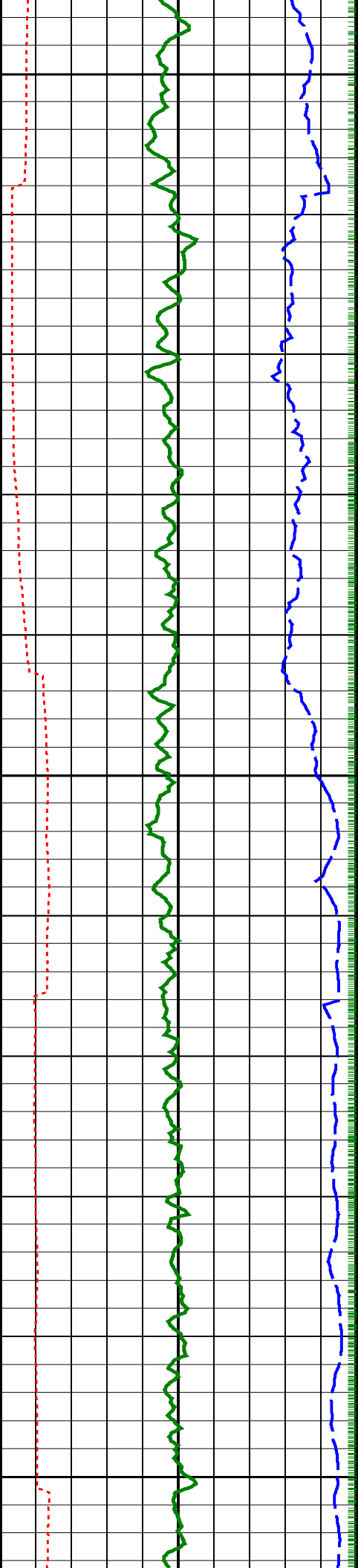


1800

1825



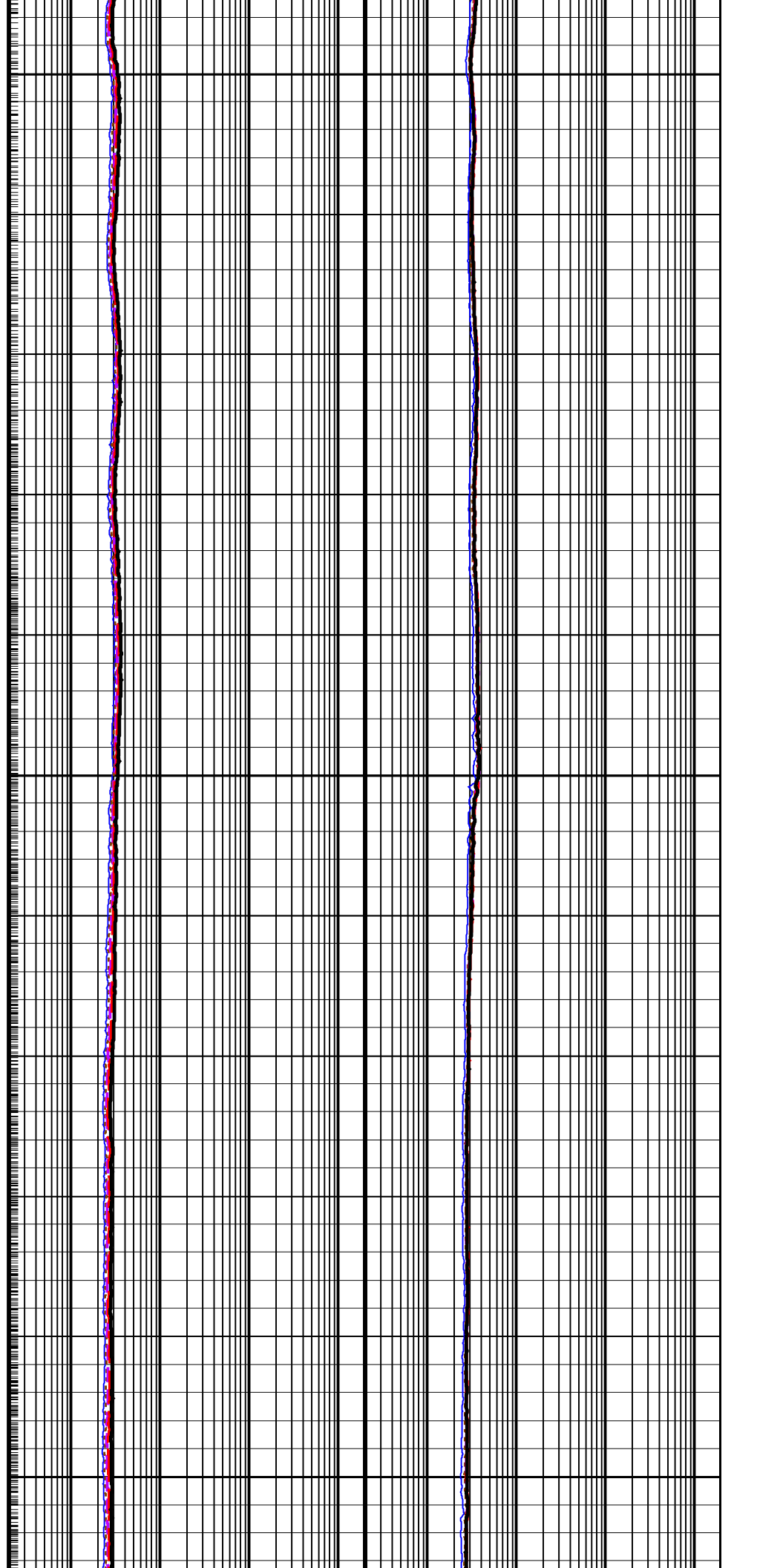


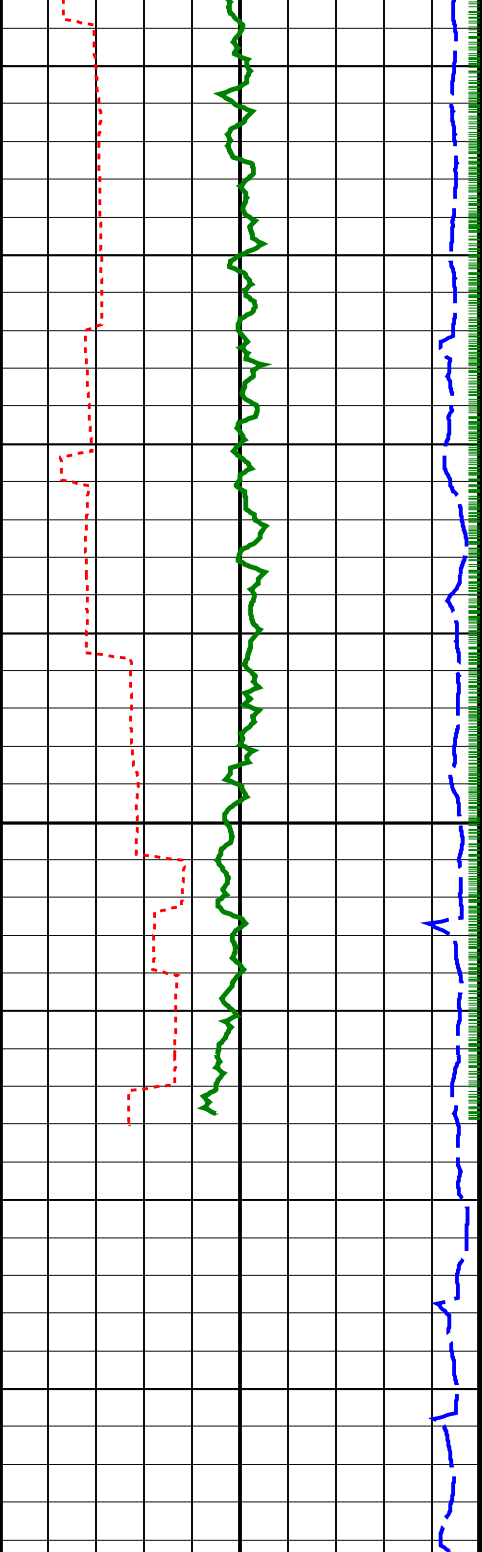


1850

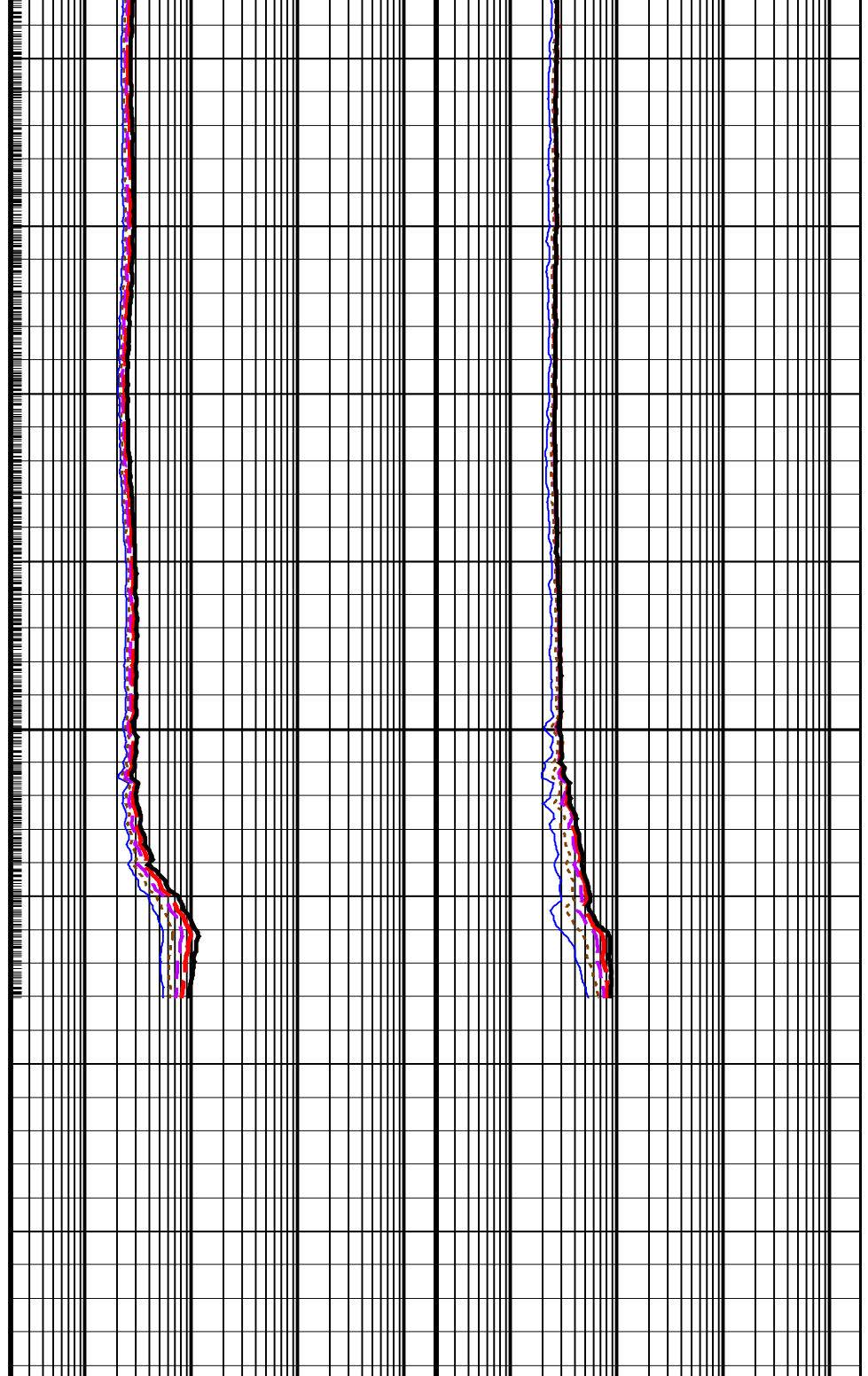
1875

1900





1925



ARC Gamma Ray (GR_ARC)		
0	(GAPI)	200
ARC Resistivity Time After Bit (TAB_ARC_RES)		
0	(HR)	10
Rate of Penetration, Averaged over Last 5ft (ROP5_RM)		
200	(M/HR)	0

ARC Phase-Shift Resistivity 16-in. at 2 MHz (P16H)		ARC Attenuation Resistivity 16-in. at 2 MHz (A16H)	
0.2	(OHMM)	2000	2000
ARC Phase-Shift Resistivity 22-in. at 2 MHz (P22H)		ARC Attenuation Resistivity 22-in. at 2 MHz (A22H)	
0.2	(OHMM)	2000	2000
ARC Phase-Shift Resistivity 28-in. at 2 MHz (P28H)		ARC Attenuation Resistivity 28-in. at 2 MHz (A28H)	
0.2	(OHMM)	2000	2000

ARC Phase-Shift Resistivity 34-in. at 2 MHz (P34H)		ARC Attenuation Resistivity 34-in. at 2 MHz (A34H)	
0.2	(OHMM)	2000	2000
ARC Phase-Shift Resistivity 40-in. at 2 MHz (P40H)		ARC Attenuation Resistivity 40-in. at 2 MHz (A40H)	
0.2	(OHMM)	2000	2000

PIP SUMMARY

- + ARC Gamma Ray Samples
- + ARC Resistivity Samples

**IDEAL Version: ID13\_0C\_08**

IDF

ARC8A-AA

id13\_0c\_02

MWD\_10

id13\_0c\_02